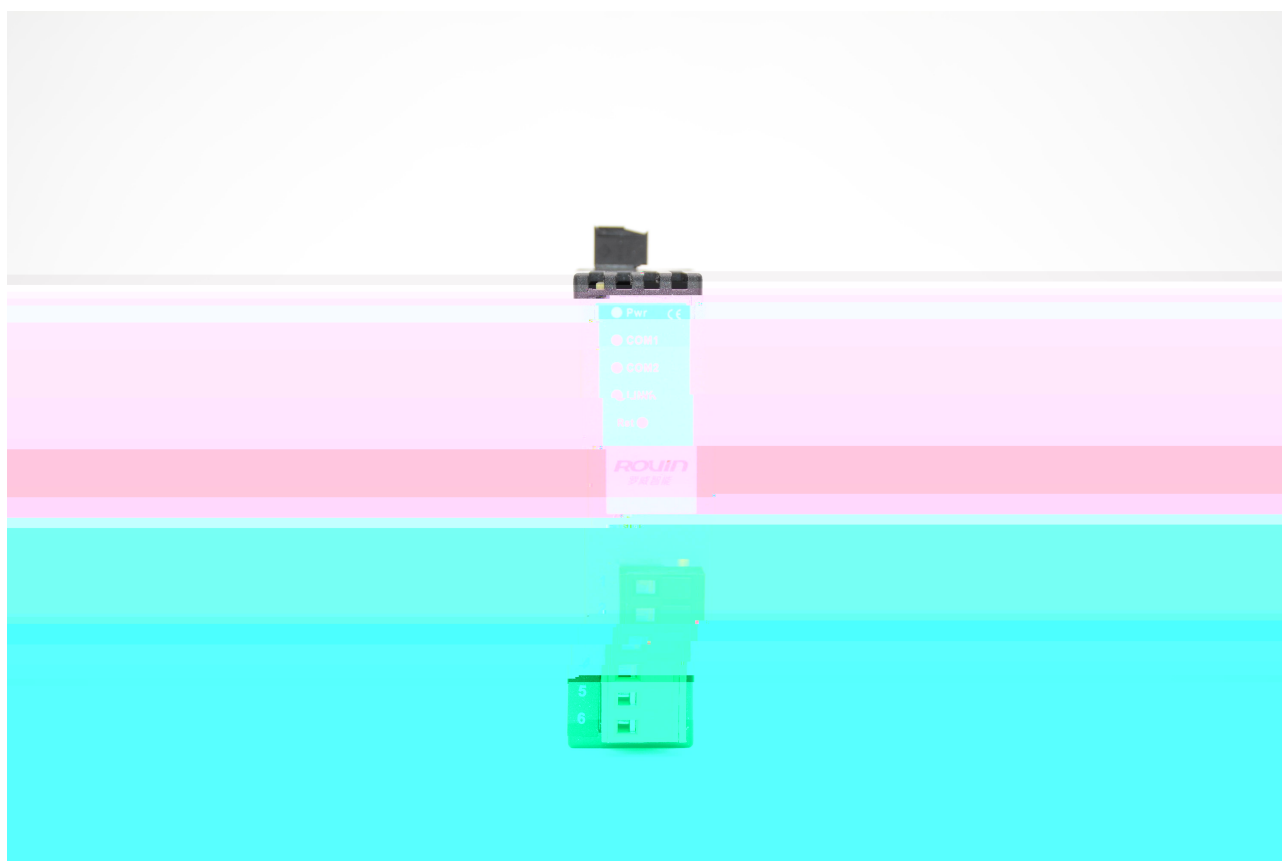
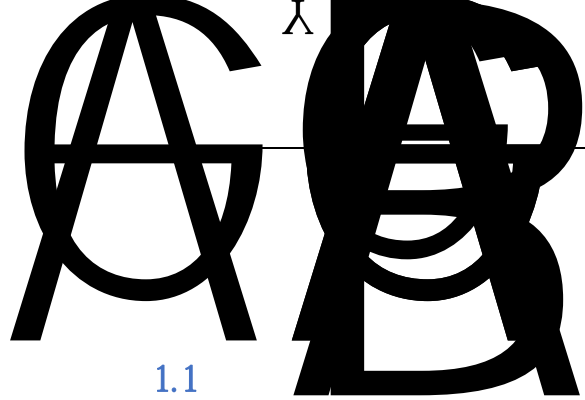




# RVNet-MB

Modbus





1.1

RVNet-MB



TCP

RVNet - MB  
2 RVNet - MB

Modbus RTU/ASCII Modbus TCP

PLC

TCP

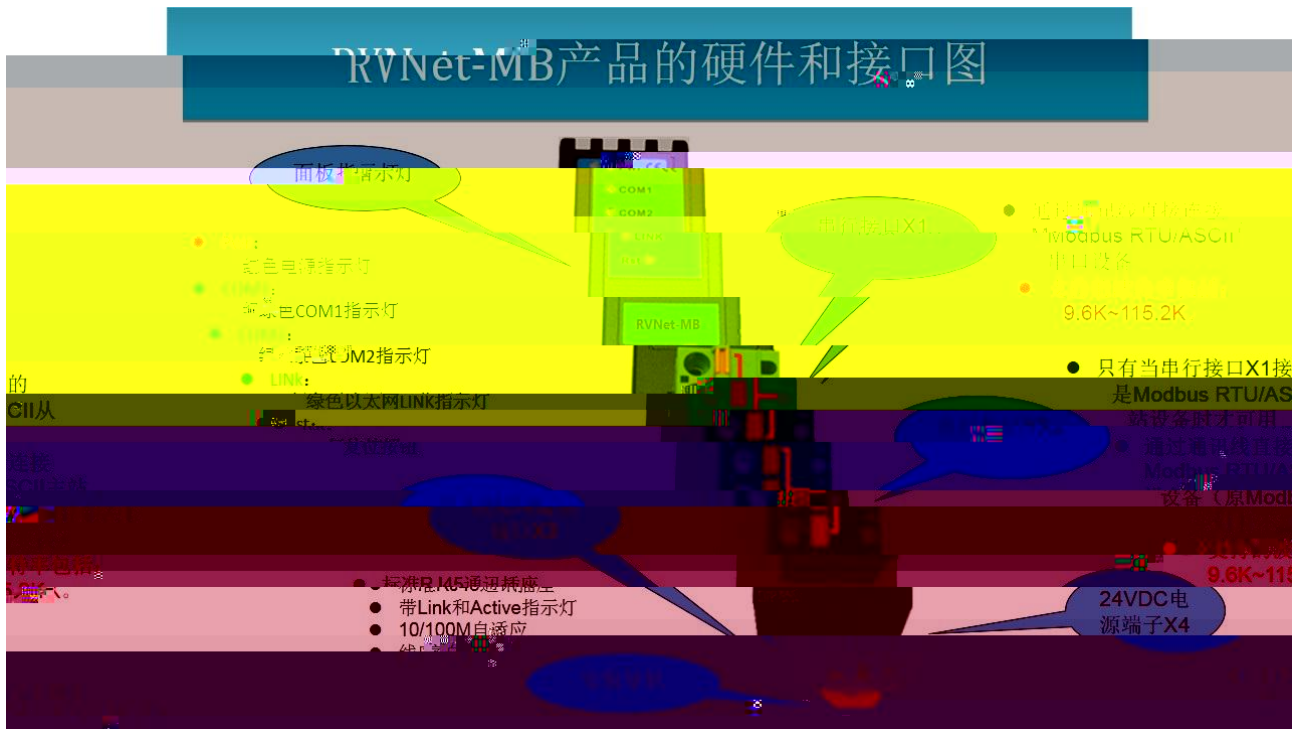
RVNet - MB

TCP

3 RVNet - MB Modbus TCP

2 3ms

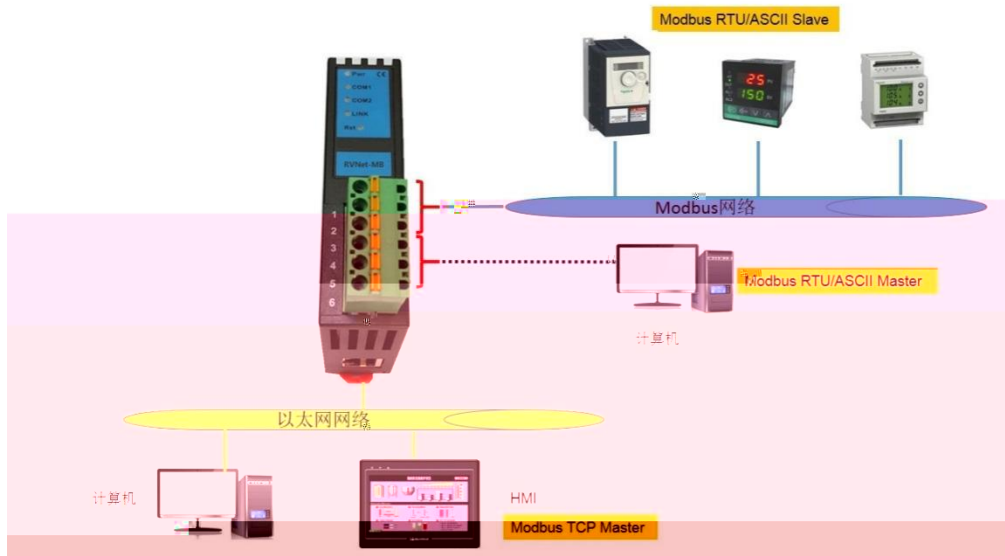
## 2.1



1.	X1	Modbus	RVNet - MB	Bus	- TCP	Modbus	X2
		Modbus	Modbus	Modbus	Modbus	Modbus	
		Modbus	RVNet - MB	Bus	-- TCP		
2.	X2	X1	Modbus	RVNet - MB	Bus		
	- TCP						
3. Rst:	5-6	COM					

2.2

2.2.1



- 1. Modbus                      Modbus                      X2
  - 2.                      6                      Modbus RTU/ASCII
  - 3. Modbus                      RS485                      RS232                      Modbus
- Mosbus

2.2.2



- 1.                      Modbus RTU/ASCII                      Modbus TCP
- 2.                      X2

**23**

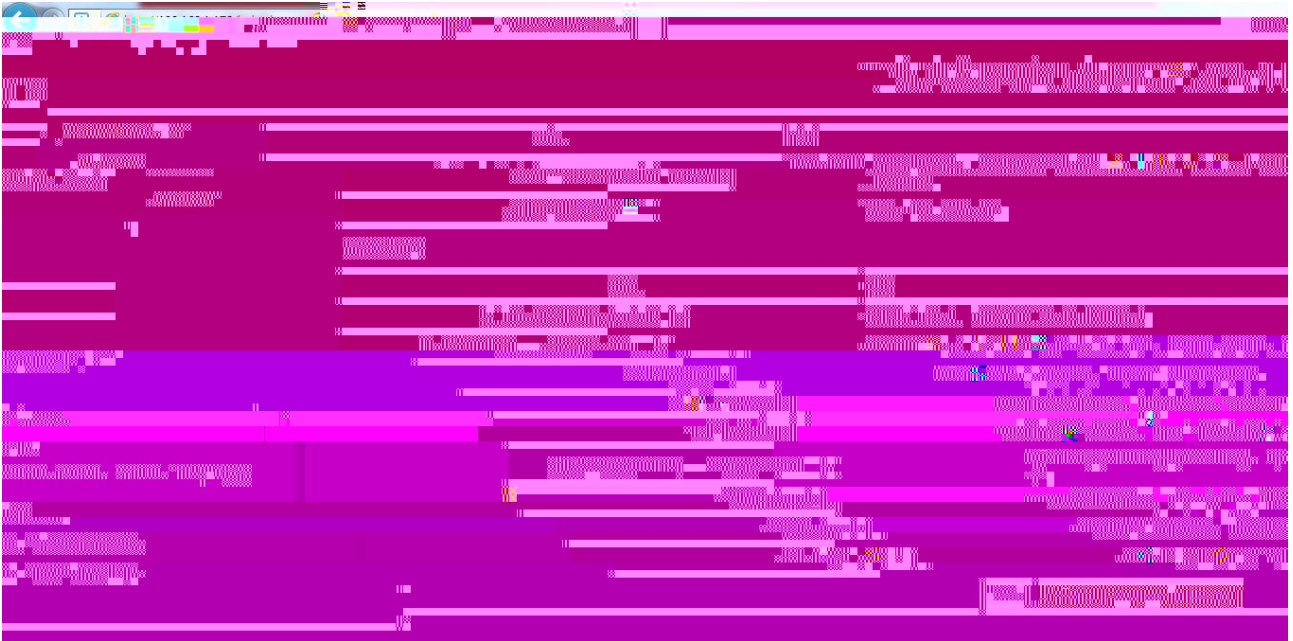
RVNet-MB	4	X1	X2	RJ45	X3	X4
----------	---	----	----	------	----	----



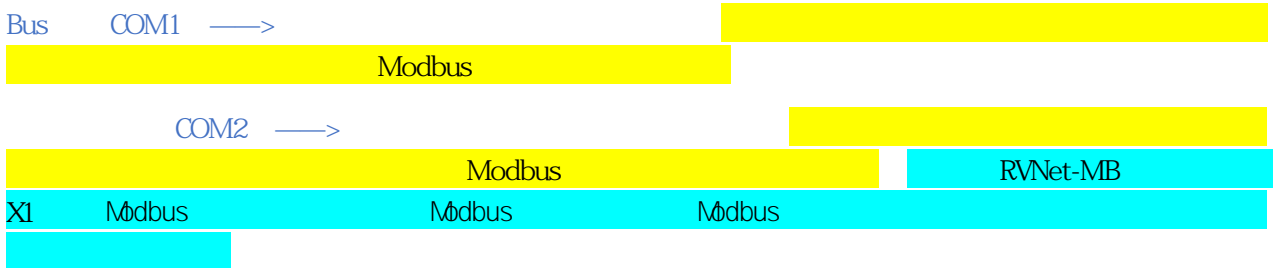
Internet Explorer t

192.168.1.1 t r

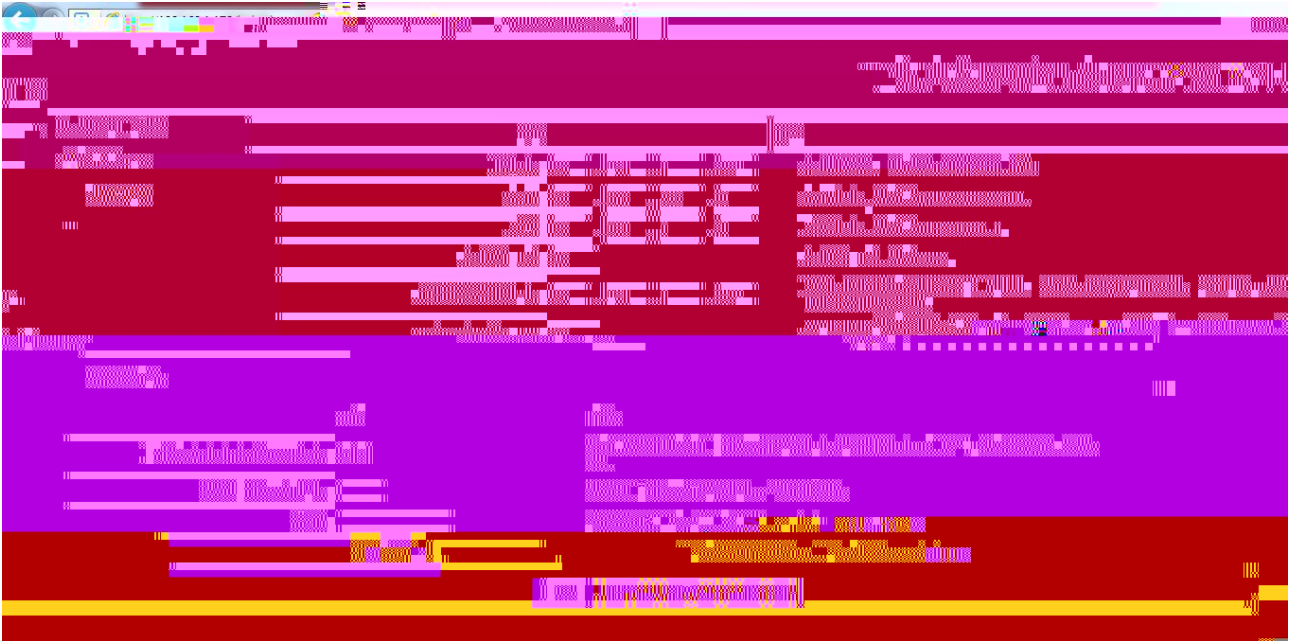
3.2.1



RVNet-MB Bus —TCP Bus —TCP RVNetTCP  
 Bus —TCP RVNet-MB Modbus Modbus  
 TCP TCP , 22  
 RVNet-MB 3  
 RTU ASCII RTU



3.2.2



RVNet-MB IP

[ ]

RVNet-MB

IP

ModbusTCP

502

IP

RVNet-MB

IP

Bus

—TCP

RVNet-MB

Bus

—TCP

Modbus

“ ”

Bus —TCP

“

”

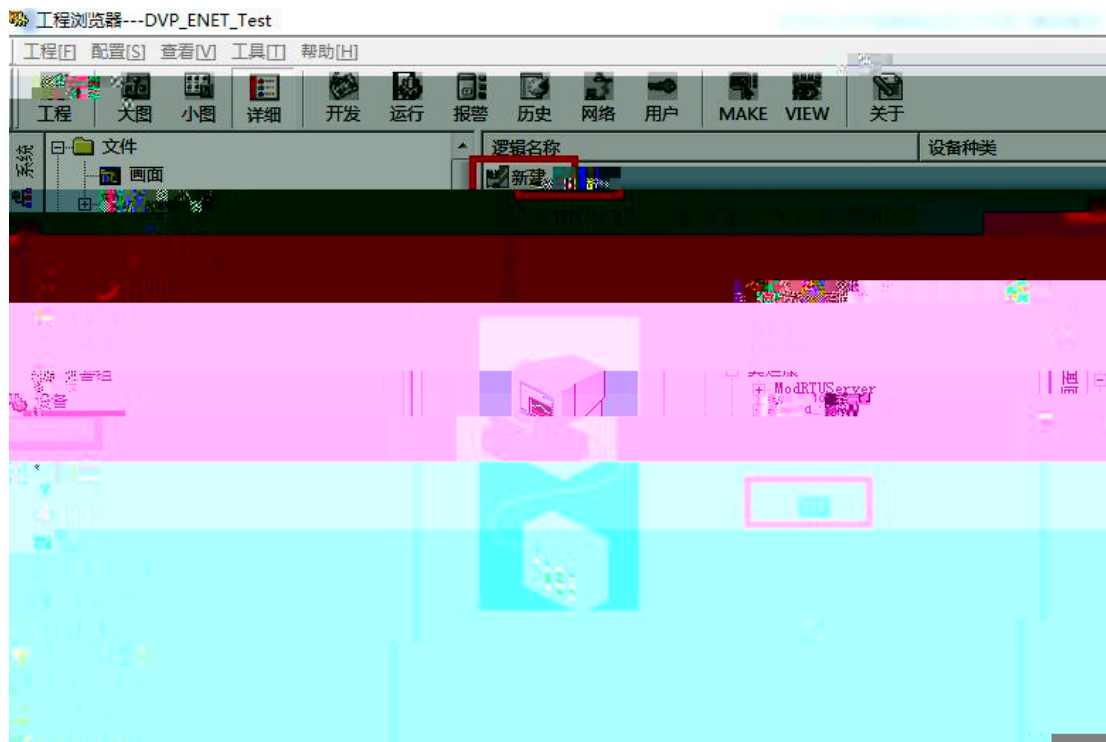
modbus

Bus —TCP

[ ]

RVNet-MB





3.

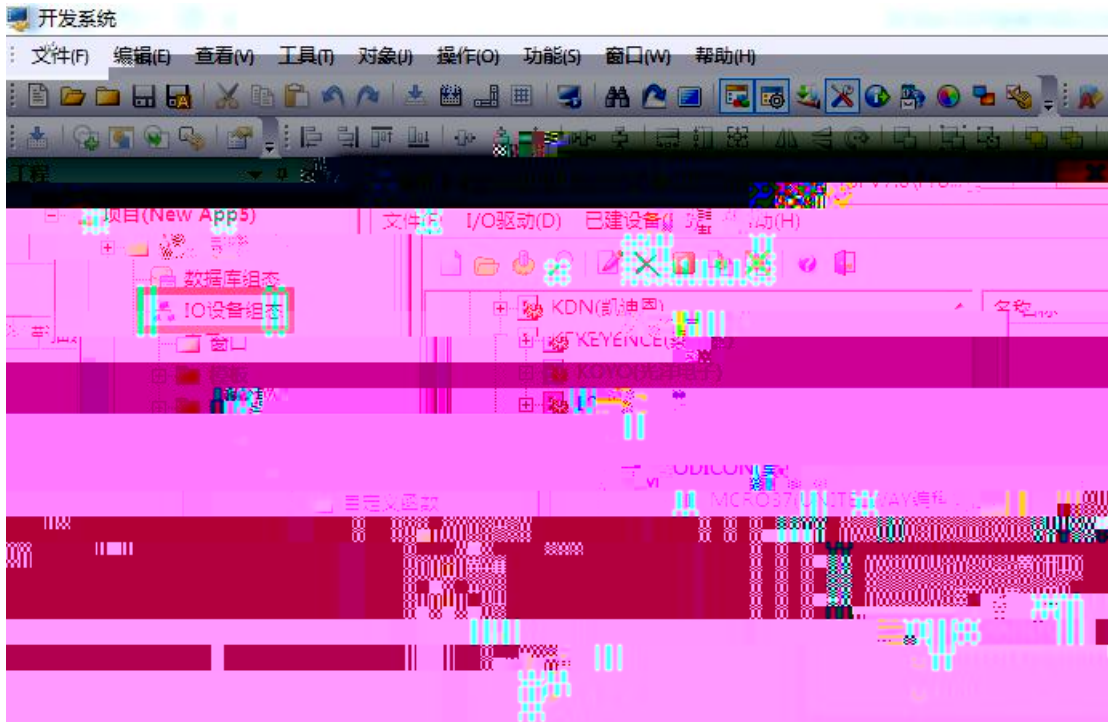


4. RVNet-MB IP 12.60.0.1 QHU-1-4S-EF-p QHU-1-1° A Y@D



## 4.2 RVNet-MB

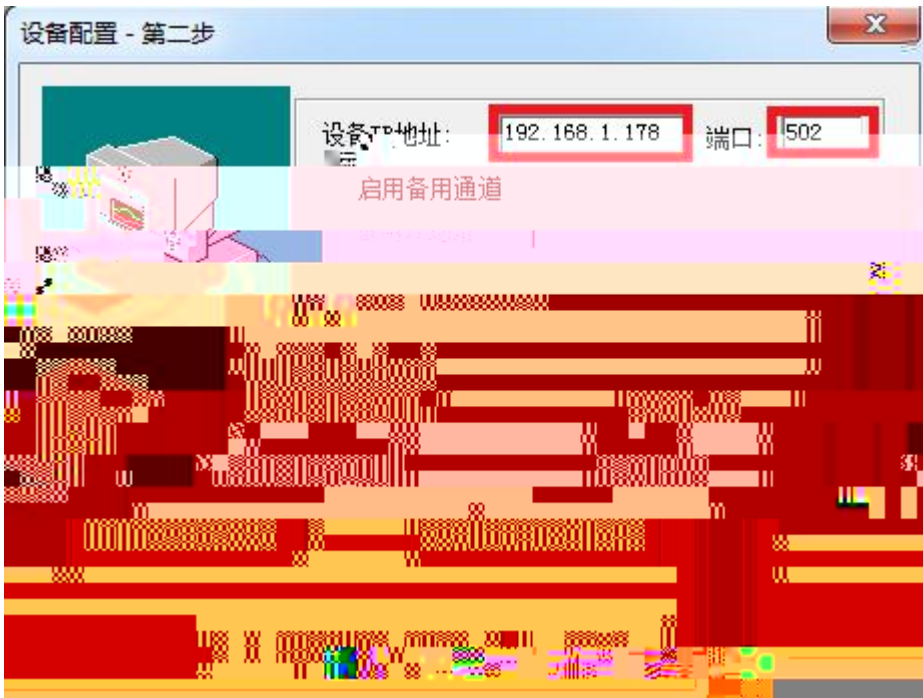
1. " IO " PLC " MODI CON - MODBUS TCP "



2. " " DVP " " 1



3. " IP " RVNet-MB IP 192.168.1.178 " " 502

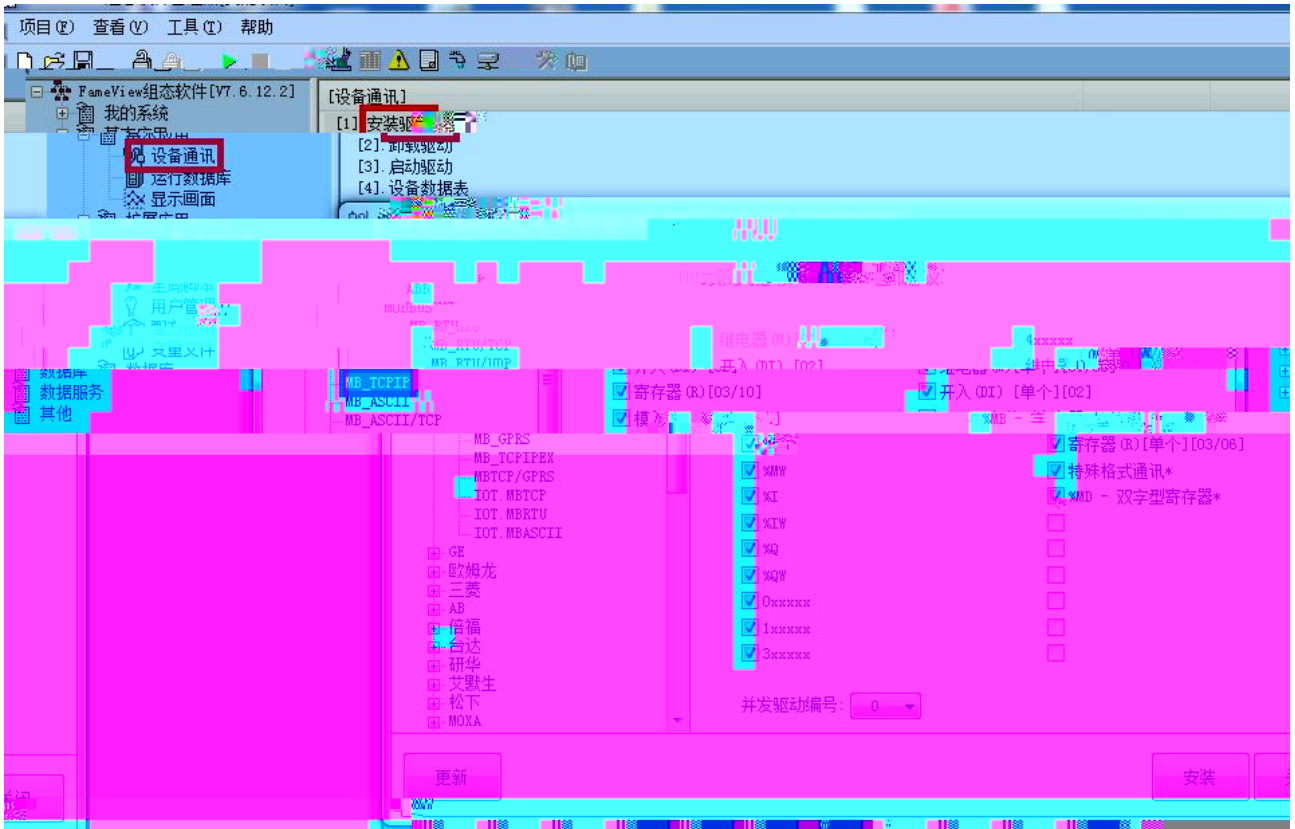


4.

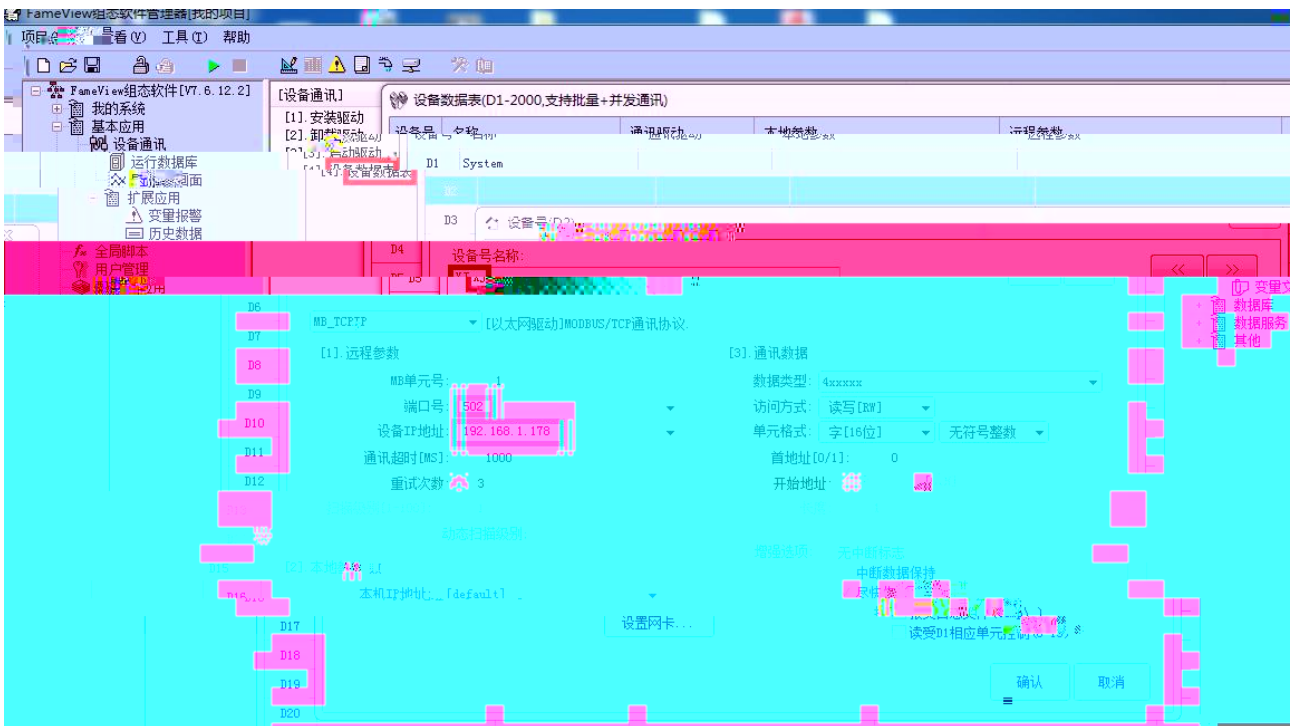


### 4.3 RVNet-MB

1. " " " " " " MB\_TCPI P " "

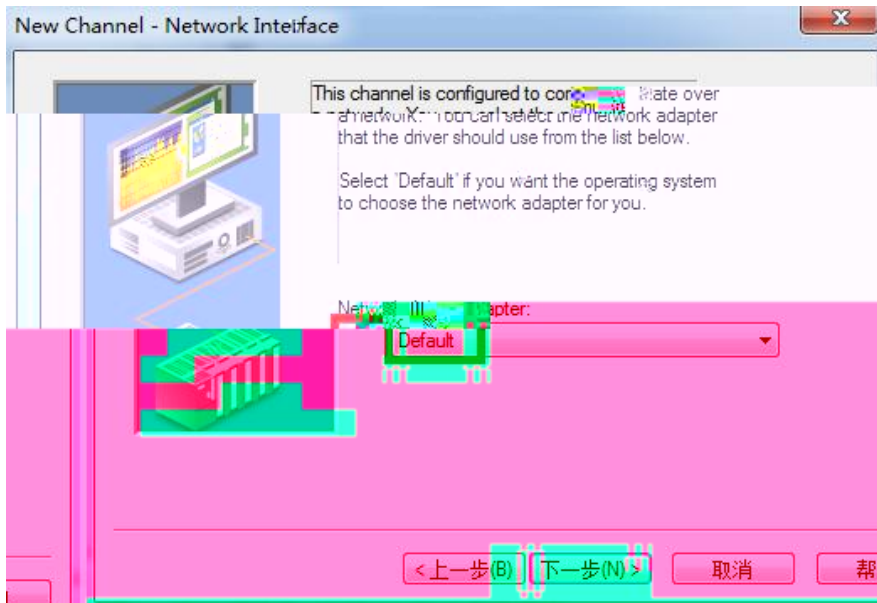


2 " " " " " XJ " MB " MB  
 Modbus " " 502 " IP " RVNet-MB  
 IP 192.168.1.178 " "

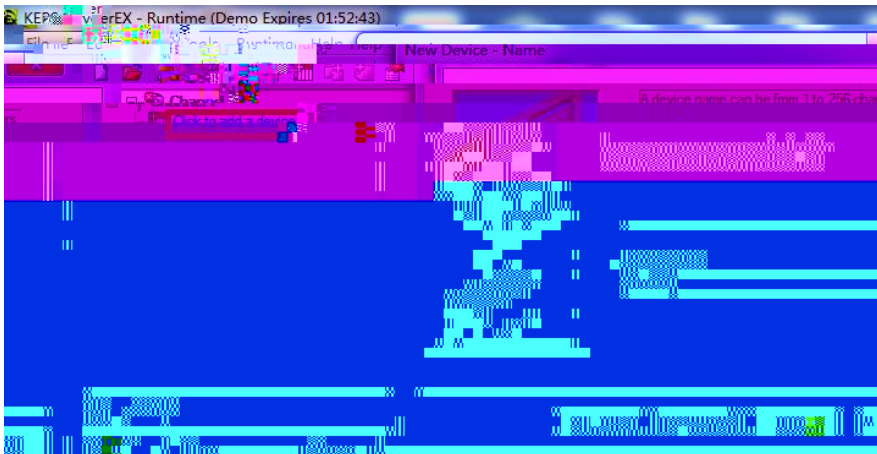


## 4.4 RVNet-MB      Kepware

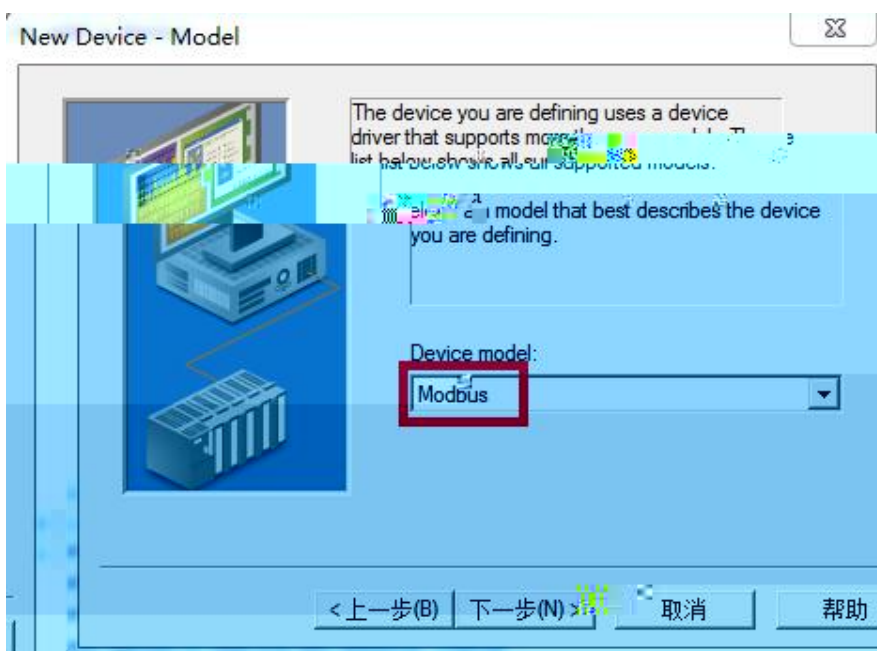
1.      KEPServerEX      “ Click to add a channel ”      i



4. " click to add a device" ,



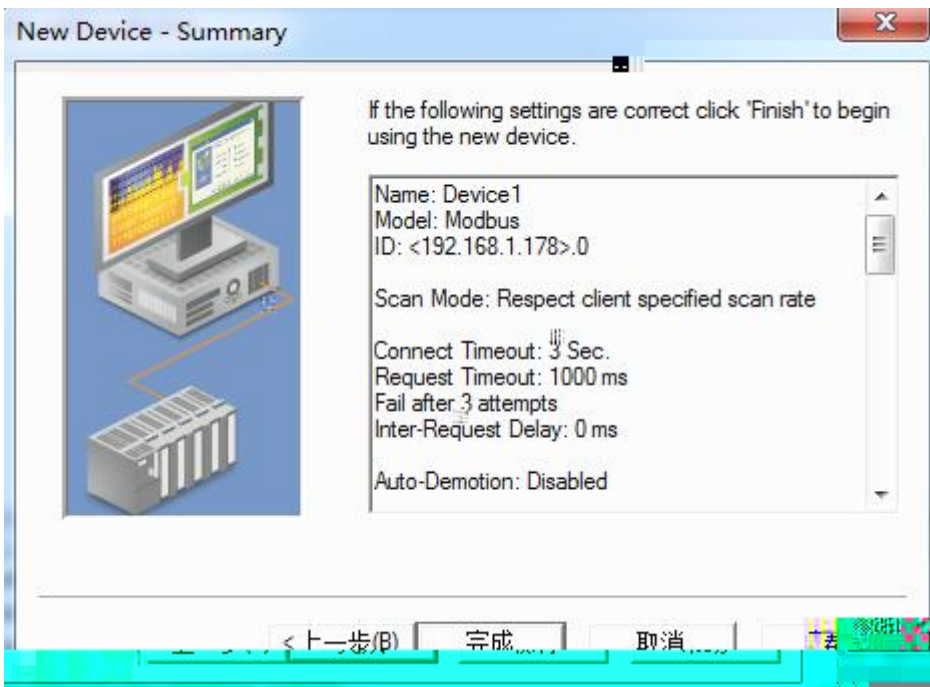
5. " Device Model " " Modbus"



6. " Device ID" IP 192.168.1.178.0 Modbus

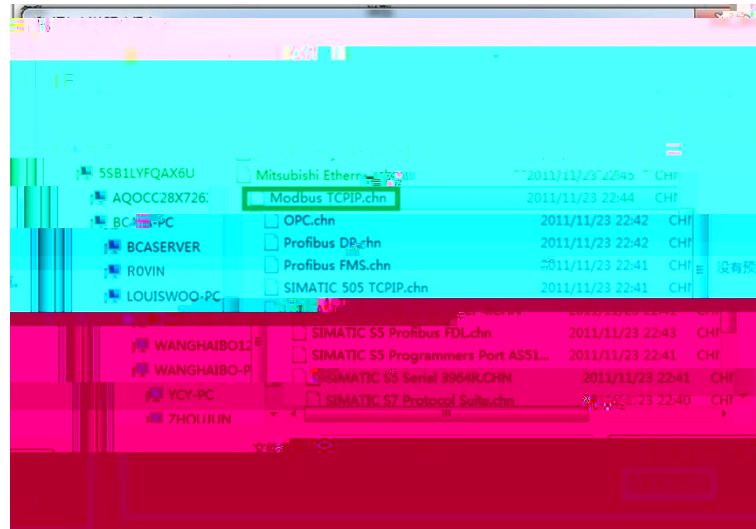


7.



#### 4.5 RVNet-MB WINCC

1. Wincc " " " i



2. “Modbus TCP/IP #1” “ ” “ ” “ ”  
 “ CPU ” “ 984 ” “ ” RVNet-MB IP “ ” 502 ”  
 “ Modbus ”



Modbus

Pwr COM1 COM2 Link

IEEE 802.3 Link/Active

Auto-MDIX

RJ45

10/100Mbps

Modbus TCP

TCP	6
X1	RS485 RS232
	9.6K~115.2Kbps
	Modbus RTU/M

2755

250101

0531-88689022

0531-88689022

111

266107

0532-68894021 83029299

0532-83029299

18753243991 [garywei@dingtalk.com](mailto:garywei@dingtalk.com)

[www.roviniot.com](http://www.roviniot.com)

